



---

# ***HINDLEPOWER***

**Utility Battery Chargers  
DC Power Systems  
Custom Design**



---

***HINDLEPOWER***  
Quality & Integrity - Our Passion



- ❖ *Hindle Transformer Company founded 1948*
- ❖ *Hitran Corporation Flemington, NJ*
- ❖ *HindlePower, Inc. Easton, PA, Incorporated 2000*
- ❖ *40,000 sq. ft. Facility*
- ❖ *75 Employees*



---

# ***HINDLEPOWER***

## **Product Line Portfolio**

# ***Quality Charger Products Made in U.S.A.***

- **AT Series- Microprocessor Controlled**
  - **AT10.1** – Single-phase input
  - **AT30** – Three-phase input
- **SCR – Analog controlled single & three-phase**
- **UMC – Universal Maintenance Charger**
- **Single Cell – Service Charger**
- **EPIC Series Consoles – DC Power Cabinets**
- **Mobile DC Power Systems – Trailers**
- **Custom Engineering**



---

***HINDLEPOWER***

**Charger Overview**

# Quality Charger Products Made in U.S.A.

- Classic Workhorse
- Single and 3 Phase
- 12-260 Vdc
- 6-1,000 Adc



# The AT Series

- Microprocessor Controlled Battery Charger
- Single (AT10.1) and 3 Phase (AT30) models for almost any application
- Communications Module for Remote Monitoring
- Can Include a Breaker Panel for Power Distribution (AT-DC)



# Many Output Options

**12, 24, 48, 130 Vdc**

## Single Phase (AT10.1)

**Current**

**6, 12, 16,  
20, 25, 30,  
40, 50, 75,  
100**

## 3 Phase (AT30)

**Current**

**25, 30, 40,  
50, 75, 100,  
125, 150,  
200, 250,  
300, 400,  
500, 600,  
800, 1000**



# *The AT Series*

## *Standard Product Features*



- **Microprocessor Controlled with Digital LED Display**
- **Universal Control Board**
- **Standard Alarms: High DC and Low DC, DC Output Failure, AC Input Failure, (+) Ground, (-) Ground**
- **Forced Load Share**
- **Remote Voltage Sense**
- **Patented Safety Shield**
- **5-Year Standard Warranty**

# Feature Rich and Easy to Use

Selectable Meter Settings or auto cycle through configuration

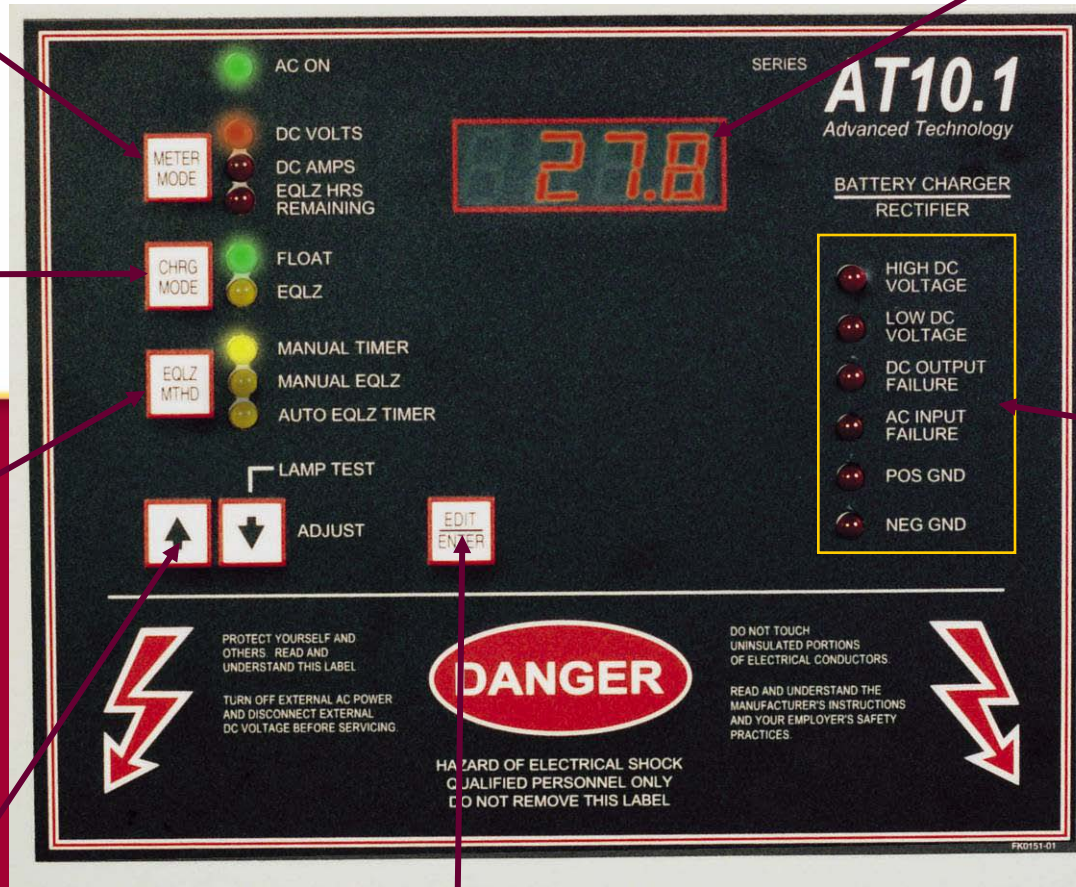
Selectable Float or Equalize setting – or a mode indicator.

Equalize method – manual or automatic

Simple adjustments

1% digital meter indicate voltage, current, equalize time and error codes.

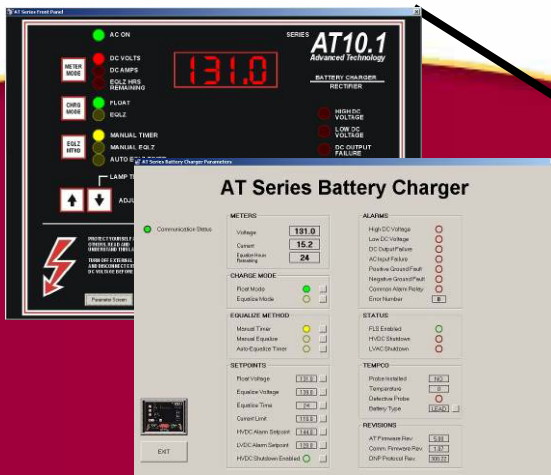
LEDs Alarm Indicators



Easy Edit Charger Settings

# Communications Module: Full SCADA Integration and Remote Connectability

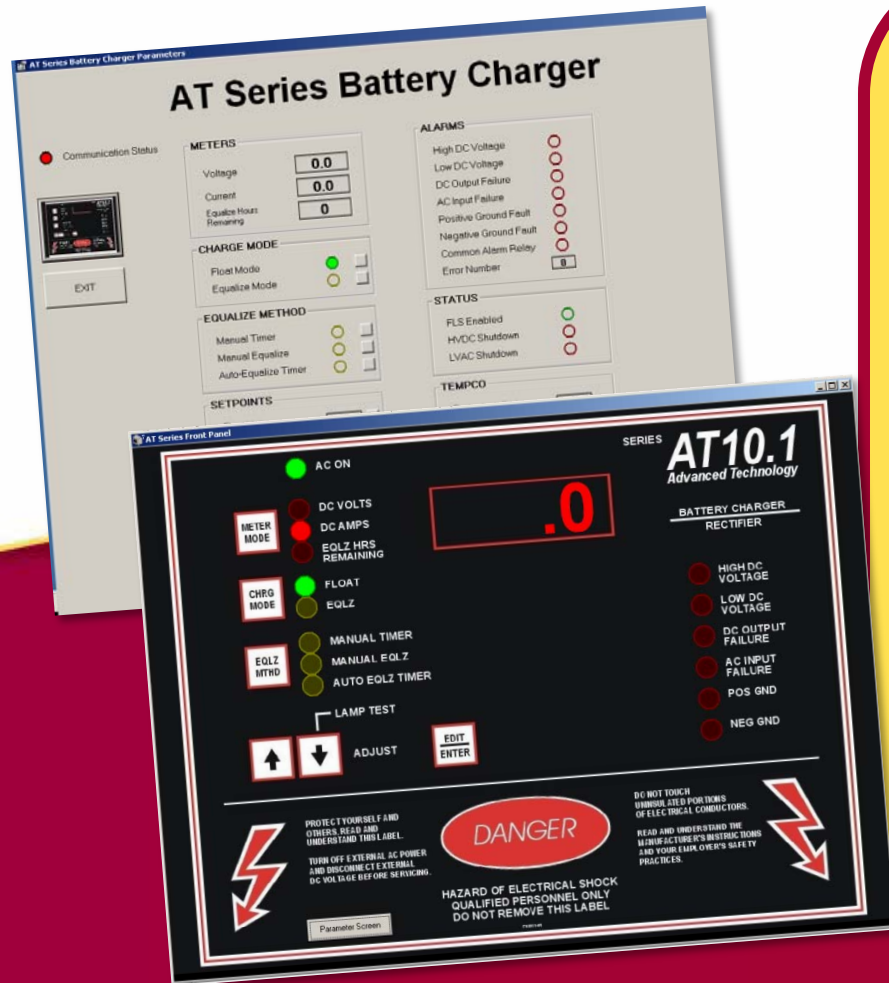
- DNP3 Level 2 and Modbus Protocols
- Serial or Modem Communication
- Simple add-on card



# Battery Charger Communications

## What functionality does the communications option provide?

- Provides status of DC system to SCADA (Supervisory Control and Data Acquisition) system
- voltage, current, temperature, alarms, charger status/error codes
- Permits remote control of the charger including set point changes



# The

# Patented

The **ONLY Patented  
Safety Shield** in the  
industry

Offers secure access  
to the inside of the



# ***The HindlePower Microprocessor***

- ❖ **Pioneered Microprocessor Charger technology in 1992**
- ❖ **Universal Control Board for the entire AT SERIES product line**
- ❖ **Easiest charger to use on the market: No hidden menus or codes**
- ❖ **Front panel control lock out standard**
- ❖ **Individual Alarm Lamps standard**
- ❖ **Remote Voltage Sense and Load Share included**
- ❖ **Complete Self-Diagnostics from Start-Up through Operation**
- ❖ **Superior Customer Service**
- ❖ **Proudly manufactured in the USA**
- ❖ **Standard 5 -Year Product Warranty**

# ***UMC – Universal Maintenance Charger***

- Works with any Battery from 24 – 130 VDC
- 25 or 50 Amp Output
- Current Limit 10%-110%
- Built-in Battery Eliminator



# *The Single-Cell Charger*



- Charge a Battery Cell Without Removing it From Service
- Restore Battery Cell Balance



# ***EPIC CONSOLE***



**“EPIC” ENGINEERED POWER INTEGRATED SYSTEM**

# ***EPIC CONSOLE***



- **DESIGNED FOR STATION BATTERIES AND CHARGER**
- **FULLY ENGINEERED, ASSEMBLED**
- **TESTED PRIOR TO SHIPPING**
- **5 – YEAR LIMITED WARRANTY**

# ***EPIC CONSOLE***



- **RUGGED ALL STEEL CONSTRUCTION**
- **DURABLE POWDER COAT PAINT EPOXY FINISH**
- **DESIGNED IN CONFORMANCE WITH NEMA 1, 2 AND 3R**
- **SEISMIC ZONE 4 QUALIFIED**

# ***EPIC CONSOLE***



- **TOP AND BOTTOM VENT FOR CONVECTION AIR CIRCULATION**
- **THERMOSTATICALLY CONTROLLED FAN AND HEATER STRIPS**
- **OPTIONAL AIR CONDITIONER SIDE-MOUNTED**
- **INTERIOR SEALED LED LIGHTING**

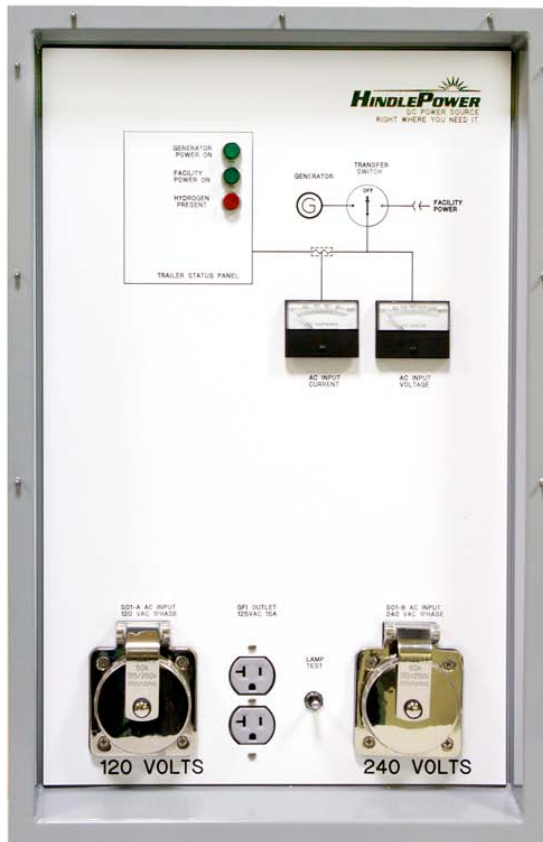
# *Mobile DC Power System*



# *Primary Applications*

- **Battery and DC System Maintenance & Testing - NERC Compliance**
- **Disaster Recovery / Black Start**
- **DC Power System Redundancy**

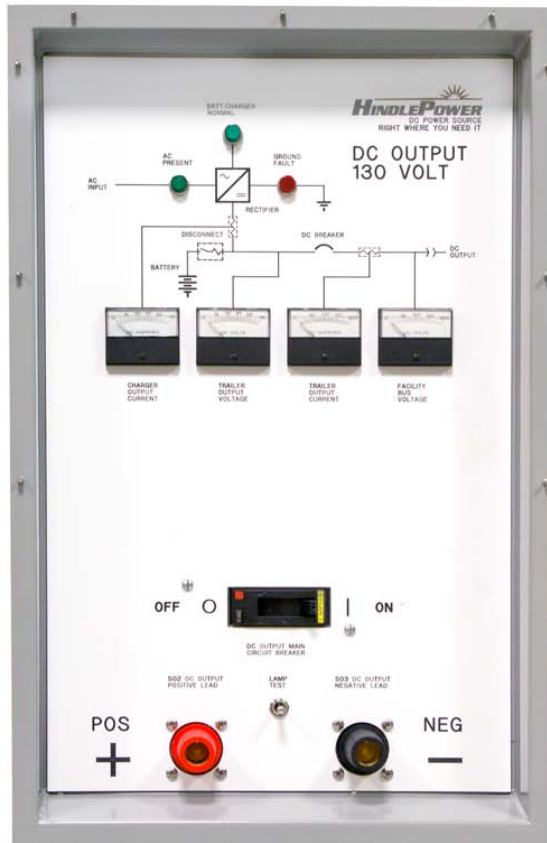
# AC Annunciator Control Panel



## External Wall-Mount

- **AC Power Diagnostics:**
  - Voltmeter
  - Ammeter
  - Alarm Indicators
  - Mimic Panel Format
- **AC Power Receptacles**
- **Circuit Breaker Protection**
- **Trailer equipped with 240Vac, single-phase input**
- **Supplemental 120Vac input option available**

# DC Annunciator Control Panel

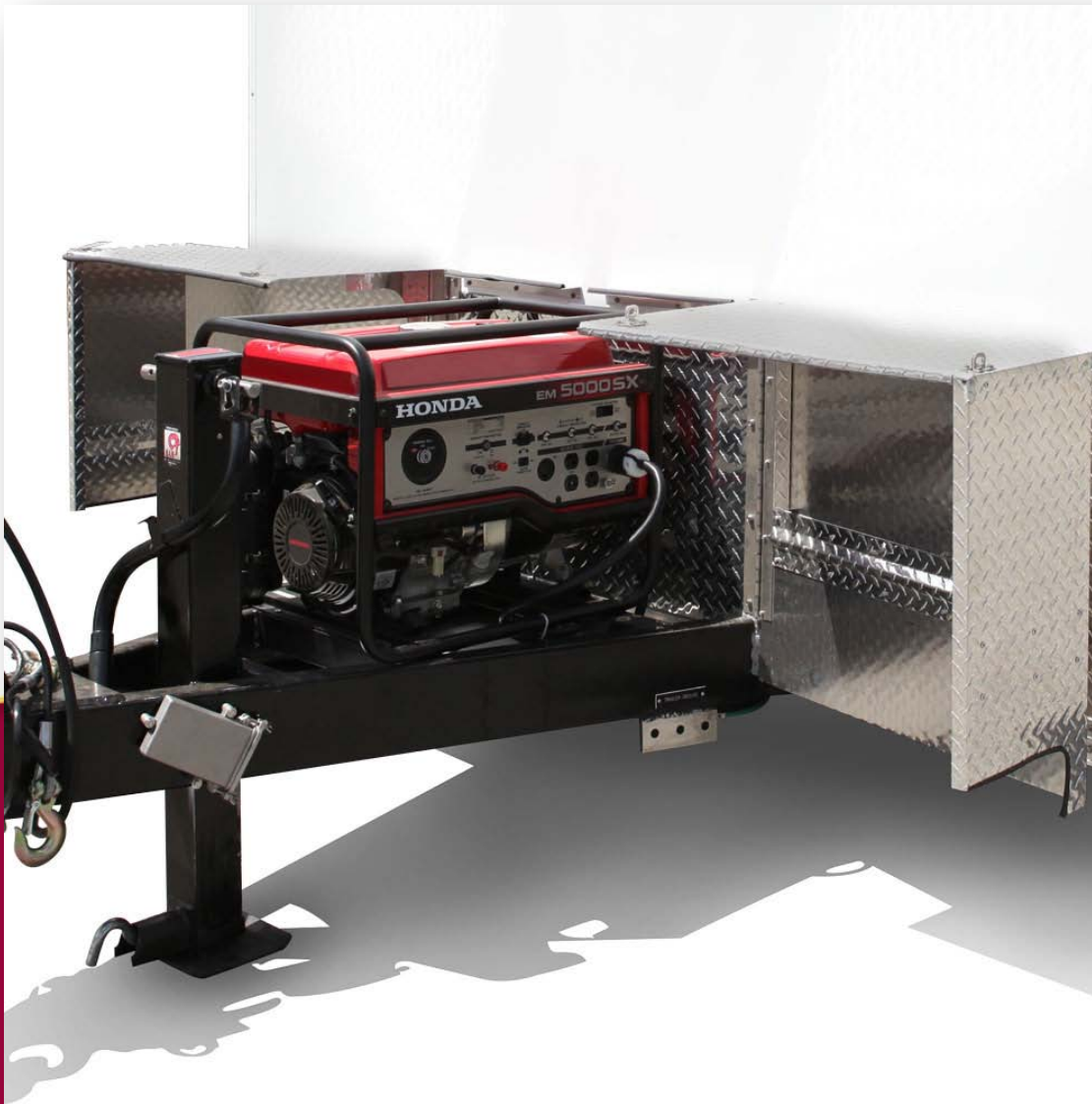


## External Wall-Mount

- **DC Power Diagnostics:**
  - Voltmeter
  - Ammeter
  - Alarm Indicators
  - Mimic Panel Format
- **DC Power Receptacles**
- **Circuit Breaker Protection**

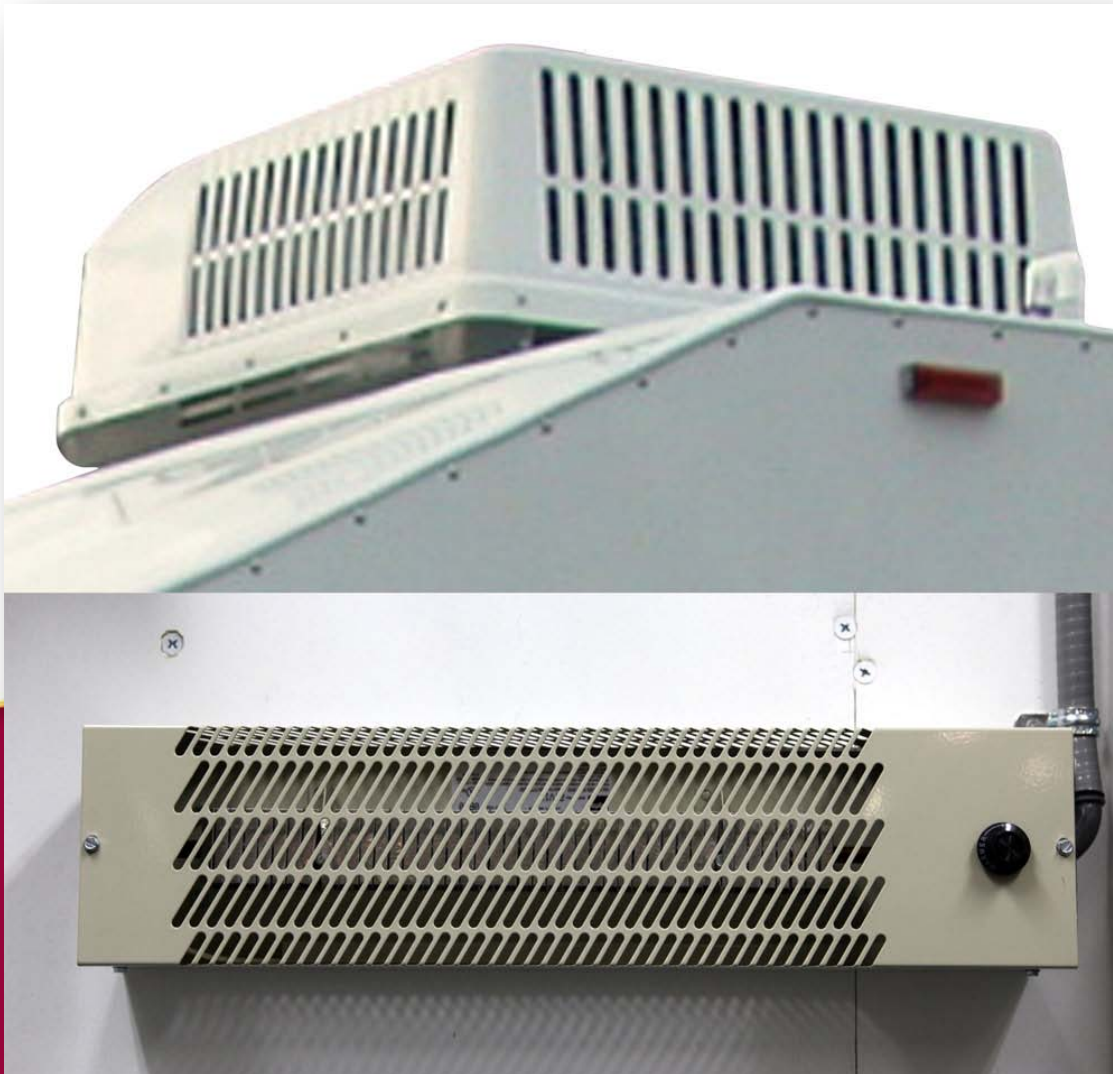


# Generator

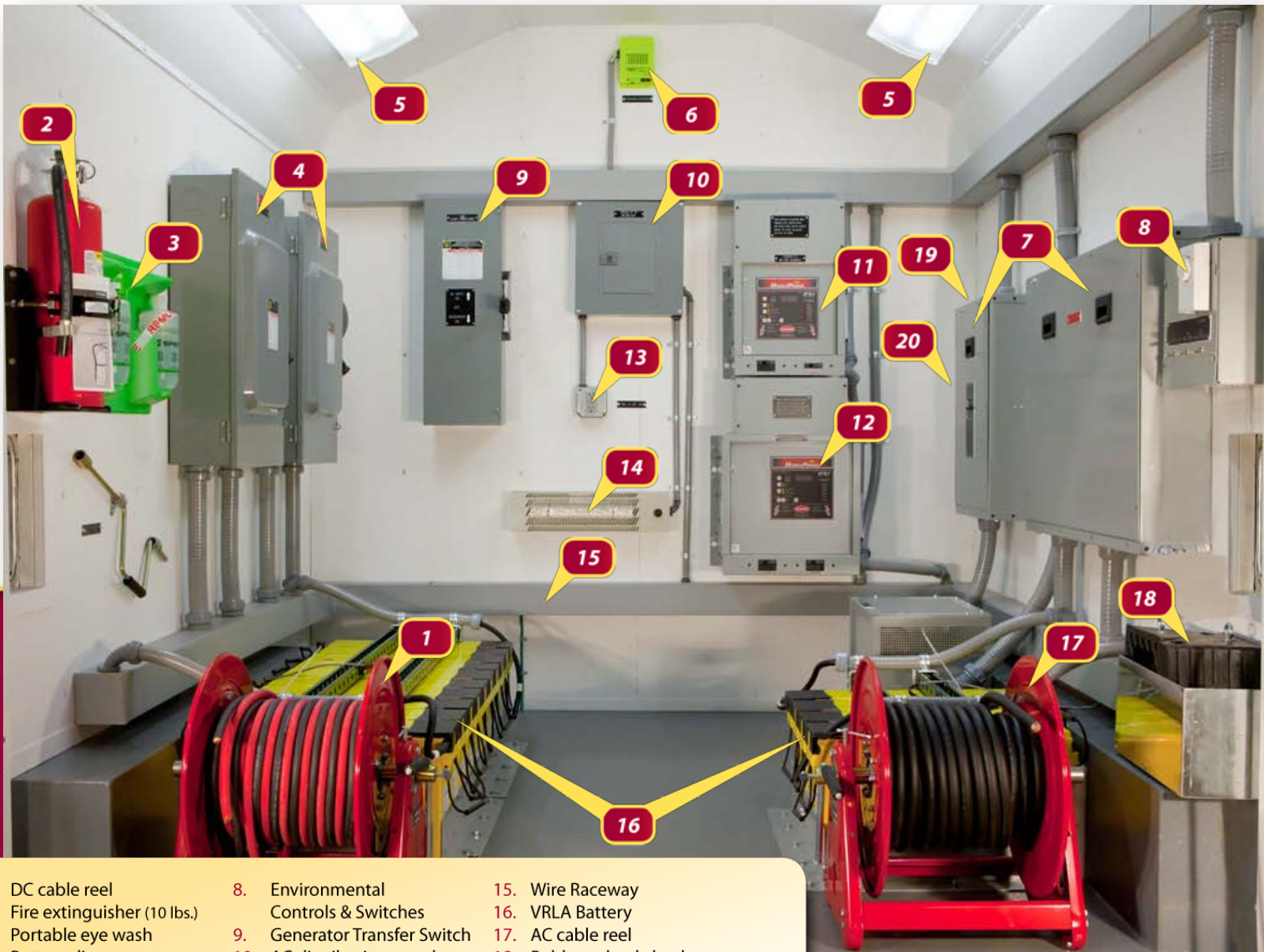


- Tongue-mounted with clam-shell , pad-lockable enclosure
- 5-6KW typical
- 240Vac, 1-phase. Other output voltages available

# Climate Control



- Thermostat-controlled convection heating and/or optional roof-mounted A/C available



- |                                |                                      |   |
|--------------------------------|--------------------------------------|---|
| 1. DC cable reel               | 8. Environmental Controls & Switches | 15. Wire Raceway                                    |
| 2. Fire extinguisher (10 lbs.) | 9. Generator Transfer Switch         | 16. VRLA Battery                                    |
| 3. Portable eye wash           | 10. AC distribution panel            | 17. AC cable reel                                   |
| 4. Battery disconnect          | 11. 48V battery charger              | 18. Rubber wheel chocks                             |
| 5. Fluorescent lighting        | 12. 130V battery charger             | 19. Mounted Engraved System Schematic (not visible) |
| 6. Hydrogen Sensor             | 13. GFI Service outlet               | 20. Wall mounted manual pocket (not visible)        |
| 7. AC/DC control panels        | 14. Convection Heater                |   |

For more product details visit us at . . .

[www.hindlepowerinc.com](http://www.hindlepowerinc.com)

or call us at 610-330-9000